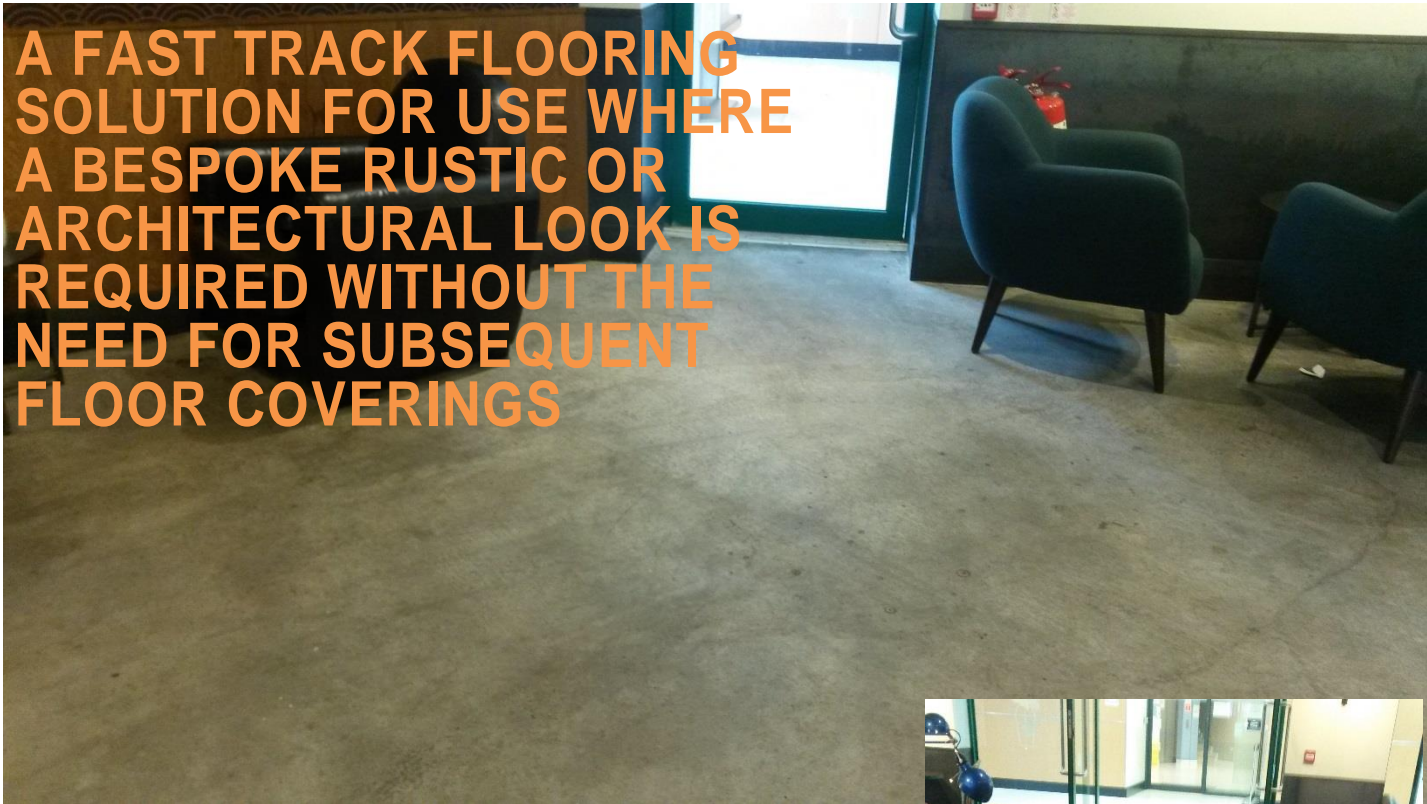


**A FAST TRACK FLOORING SOLUTION FOR USE WHERE A BESPOKE RUSTIC OR ARCHITECTURAL LOOK IS REQUIRED WITHOUT THE NEED FOR SUBSEQUENT FLOOR COVERINGS**



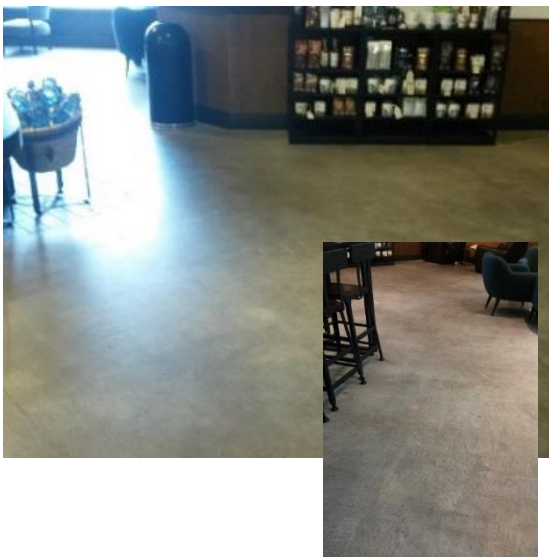
## Description

GYP SOL RUSTIQUE screed is a uniquely formulated, environmentally friendly anhydrite screed material designed specifically for use in conjunction with the easy to use, colourless SIKAFLOOR 2540w\*, Rustique seal coat from SIK A Ltd to provide a fast track flooring system that is attractive, cost effective and durable without the need for subsequent floor coverings. Time from initial installation of the GYP SOL RUSTIQUE screed to completion of the finished floor can be less than 1 month. It is perfect for use with or without underfloor heating and can be used for all domestic and commercial interior applications where light commercial and heavy foot traffic is likely.

Gypsol RUSTIQUE screed system is incredibly simple to use and remarkably fast to complete. Once installed by your screeding contractor simply allow the screed to dry to a suitable level of a maximum of 1.5% moisture by weight if unheated. This can take as little as 28days if dried naturally at 20°C and 60%rh. If the screed is heated using an underfloor heating system, the screed should be dried to a maximum of 0.5% moisture by weight which can take as little as 2 weeks when force dried in well controlled conditions. The screed can then be sanded to taste dependent on the aesthetic requirements of the client which may be as little as removing any loose friable debris and laitance through to exposing the aggregate within the screed. The colourless SIKAFLOOR 2540w\* Rustique seal coat is then applied in 2 coats by any suitably skilled installer. No special hardeners, sealers or polishes are required and minimal maintenance is necessary.

For project specific advice on design and for a model specification, contact our technical and specifications team on 01928 574574

For information specific to SIKAFLOOR 2540w\* Rustique Seal Coat contact SIK A Ltd sales on 01707 394444 or E-mail [flooring.technical@uk.sika.com](mailto:flooring.technical@uk.sika.com)



## PHYSICAL DATA (Screed)


Appearance	Off white fluid mortar
Density	Wet 2200kg/m <sup>3</sup> Dry 2000kg/m <sup>3</sup>
Typical Strength (28 days)	C30-F5
Required Flow (EN13454-2)	230mm to 270mm
Reaction to fire	Class A1 <sub>fl</sub> non combustible

## PERFORMANCE DATA (Screed)

Working Time	Place within 2 hours of batching, Finish within 1 hour of placing
Foot Traffic	24 to 48 hours
Loading	7 days
Drying Time (20°C/60% RH)	in excess of 1mm per day <sup>[1]</sup>
Force Drying	Can be force dried after 7 days
Minimum Depth	40mm floating commercial; 35mm floating domestic; 25mm bonded, 30mm unbonded; 25mm cover to heating conduits

[1] Independently tested and verified by Action Dry Ltd. Full report available on request

## ENVIRONMENTAL DATA (Screed)

Recycled content	Binder	98%
	Mortar	up to 40%
Carbon Emissions	Binder	20 to 40kg per tonne
	Mortar	30 to 50kg per m <sup>3</sup>
VOC	Virtually Zero	
Recyclability	100%	

## RUSTIQUE SEAL COAT SIKAFLOOR 2540w\*

Gypsol Rustique Screed has been uniquely developed and rigorously tested for use in conjunction with SIKAFLOOR

2540w\* Rustique seal coat available from SIK A distributors nationally. This is a simple to use, colourless two part sealer which can be applied by any suitably skilled installer directly to the surface of the screed. Some of the benefits include

- Completed quickly with no need for a traditional floor covering
- Easily available from SIK A distributors nationwide
- Removes risks and saves time and money
- Attractive rustic/architectural look tailored to clients taste
- Hard wearing and durable floor with no grout lines or additional movement joints
- Simple to apply with no further sealers, hardeners or polishes

\*Information reproduced by kind permission of SIK A Limited. Please refer to the SIKAFLOOR 2540w data sheet for more detailed information

## HEALTH AND SAFETY DATA (Screed)

Gypsol RUSTIQUE screed is delivered to site ready to use via offsite mixing plants eliminating the need for labour intensive site mixing and associated mixing equipment.

Gypsol RUSTIQUE screed is pumped directly to where it is needed, eliminating much of the manual handling operations required to install other screeds.

Gypsol RUSTIQUE screed is generally pumped using equipment with closed or grilled dispensing hoppers, removing risk of contact with moving machinery.

Gypsol RUSTIQUE screed is finished using a lightweight dappling bar requiring no secondary compaction, removing most of the physical work needed to lay other screeds. This significantly reduces the negative impact on the musculoskeletal system of installing contractors. For material safety information please see the relevant safety data sheets.

A Division of  
**FRANCIS FLOWER**



t: 01928 574574

e: [ff@francisflower.co.uk](mailto:ff@francisflower.co.uk)

[www.gypsol.co.uk](http://www.gypsol.co.uk)

issue 2:

January 10, 2018

